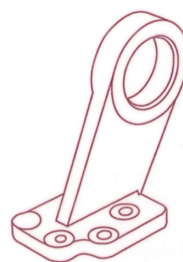
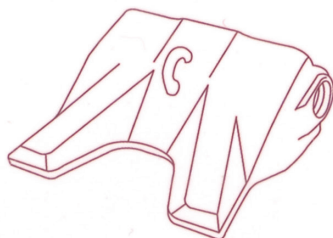
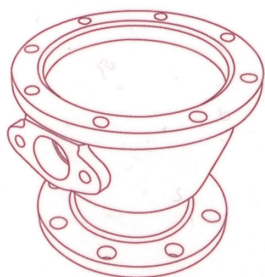


Ningbo Hongcheng Machinery Co.,Ltd.

Valve parts
Mining machinery
Construction machinery



公司简介

Company profile

NINGBO HONGCHENG MACHINERY CO., LTD was founded in 1998, closing to Shanghai and Ningbo port, and it is very easy for shipping. HongCheng takes an area of 8600 square meters of which 7200 square meters is covered. HongCheng is specialized in lost wax investment process for valve casting mining casting manufacture and has total output is around 4,000 ton of casting annual.

The main production facilities include: 4 pairs of 500kg intermediate frequency melting furnaces; 4set of 10ton electric furnace for heat treatment; 4 pieces of 10 cube meter air-compression machines; 3 sets of hook-type shot blasting machine;

Main inspection and testing equipment cover: one set of spectrum analysis equipment imported from Italy; one set of 30 tons universal tensile machine, one set of HB-billed durometer and one set of impact test machine and wall thickness tester etc; HongCheng owns an capital of USD10 million and employs 160 staff including: 6 technicians, 6QC inspectors and 10 administration personnel.

The main products are carbon steel, stainless steel and alloy steel castings.

There are six ranges over 100 different types of castings for gate, globe, check, ball, butterfly and filter valves.

Castings produced in accordance with Chinese standard

GB11352 or American Petroleum Institute API

(ASTM A216, A217, A352 etc.) or per customer

special requirements. Main material we produced

as WCB, WCC, LCB, LCC, 304, 316, 316L, CF8, CF8M,

CF3, CF3M, C5, C12, WC6, WC9 ect.



Our castings are widely used in petrochemical industries and 95% of which are exported to USA, Germany, France, Italy, Spain, Japan and Korea etc., and enjoy a good reputation both in domestic and overseas markets.

From the beginning of establishment, HongCheng has paid close attention to the establishment of quality management, quality monitor and personnel quality awareness and implementation of ISO9000 international standard.

HongCheng passed ISO9001:2000, PED97/23/EC and AD2000-MerkblattW0 certification by TUV.

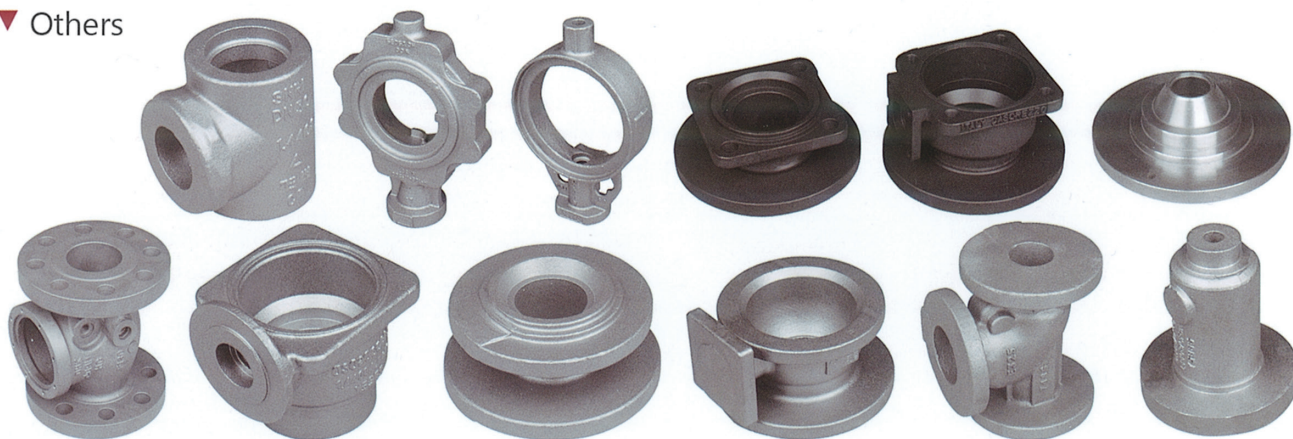




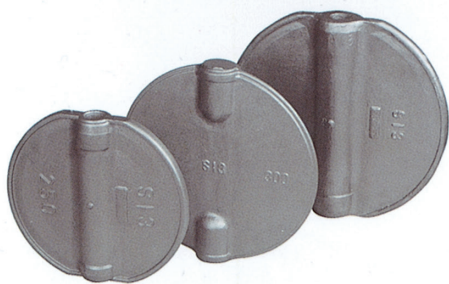
Valve Parts

www.china-supplier-casting.com

▼ Others



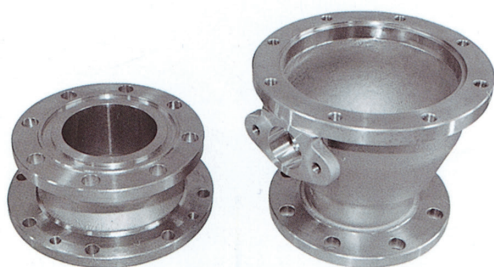
Valve Parts



▲ Butterfly disc
Material: S13 S14
Dimensions: 65A-600A



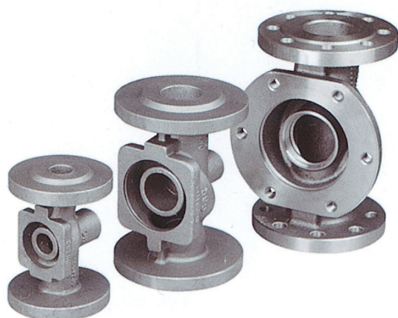
▲ Butterfly valve body
Material: WCB 1.0619 1.4408 CF8M
CF8 CF3 CF3M WC6 WC9
Dimensions: 150(10"-12")



▲ Ball valve body and bonnet
Material: WCB 1.0619 1.4408 CF8M
CF8 CF3 CF3M WC6 WC9
Dimensions: 150(1.5"-8") 300(1.5"-6")



▲ Wedge disc
Material: WCB LCB CA15 CF8 CF8
Dimensions: 2"-12



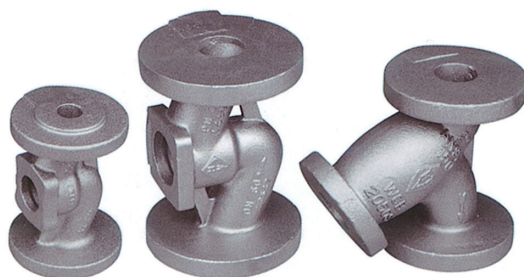
▲ Globe valve
Material: WCB 1.0619 1.4408 CF8M
CF8 CF3 CF3M WC6 WC9
Dimensions: 150(1.5"-8") 300(1.5"-6")
600(2"-4")



▲ Gate valve bonnet



▲ Gate valve body
Material: WCB 1.0619 1.4408 CF8M
CF8 CF3 CF3M WC6 WC9
Dimensions: 150(2"-12") 300(2"-8")
600(2"-4")



▲ Globe valve body
Material: WCB 1.0619 1.4408 CF8M
CF8 CF3 CF3M WC6 WC9
Dimensions: 150(1.5"-8") 300(1.5"-6")
600(2"-4")



Mining Parts

www.china-supplier-casting.com

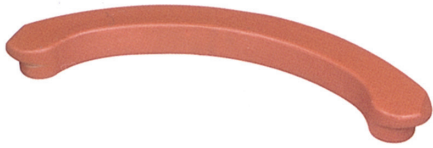


▲ Tip twin bucket



▲ Tip twin bucket

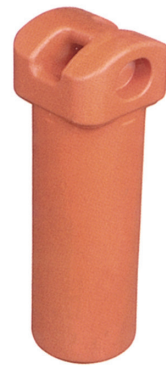
Mining Parts



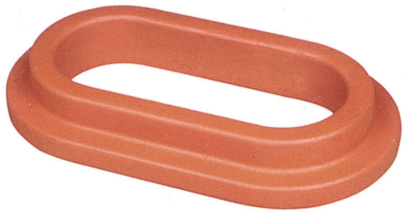
▲ Wear Bar Curved



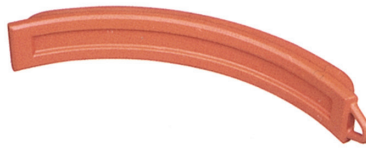
▲ Wedge



▲ Pin



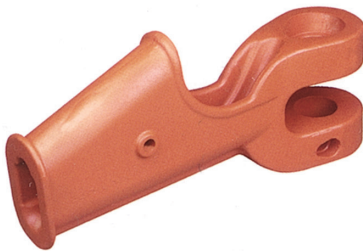
▲ Doughnut retainer ring



▲ Heelshoe thin



▲ Rope block



▲ Rope socket



▲ Weld-on block



▲ Spool



▲ Butterfly disc



▲ Butterfly disc



▲ Butterfly disc



▲ Tip twin bucket



▲ Retainer block



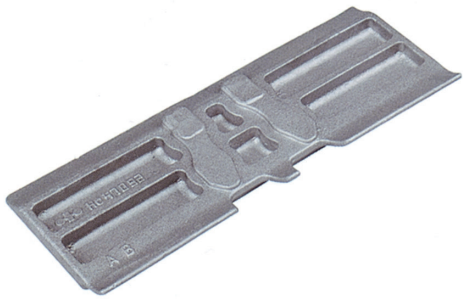
▲ Nose wear cap



Construction Machinery

www.china-supplier-casting.com

Construction Machinery



▲ Construction Machinery



▲ Construction Machinery



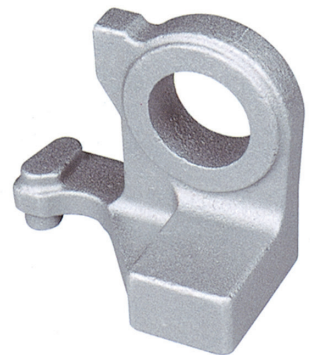
▲ Construction Machinery



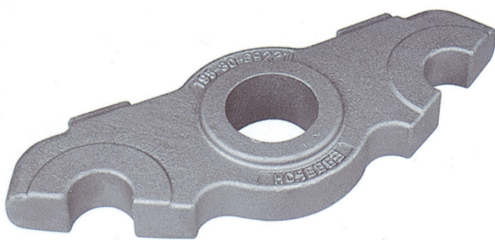
▲ Construction Machinery



▲ Construction Machinery



▲ Construction Machinery



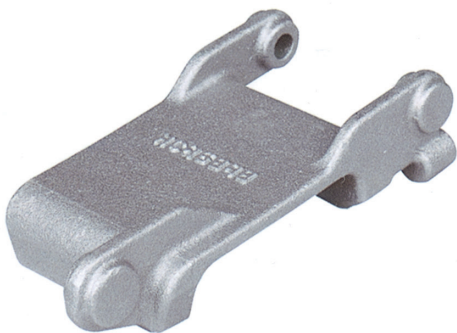
▲ Construction Machinery



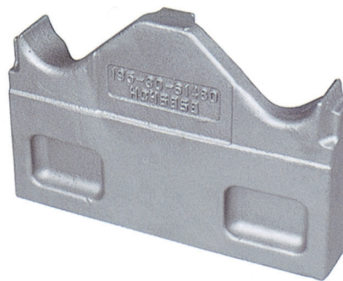
▲ Construction Machinery



▲ Construction Machinery



▲ Construction Machinery

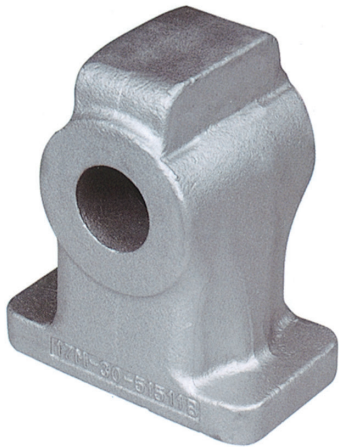


▲ Construction Machinery

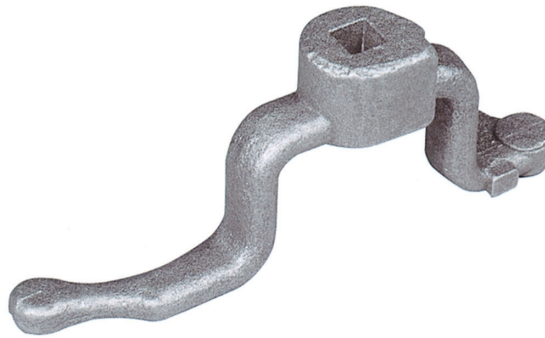


▲ Construction Machinery

Construction machinery



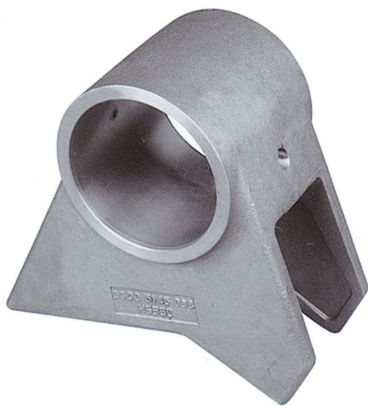
▲ Construction Machinery



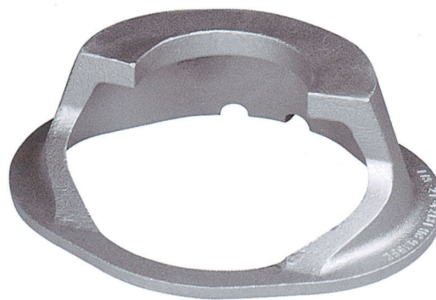
▲ Construction Machinery



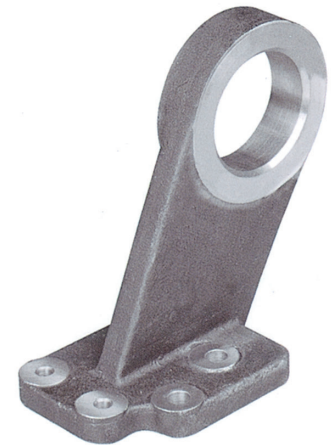
▲ Construction Machinery



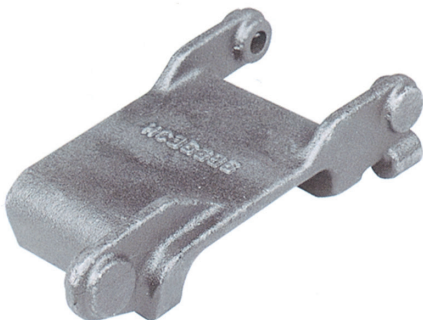
▲ Construction Machinery



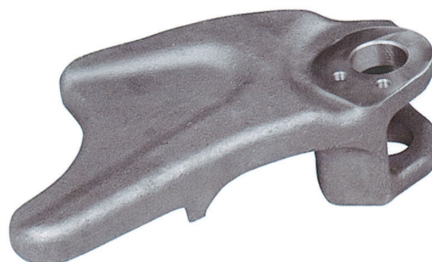
▲ Construction Machinery



▲ Construction Machinery



▲ Construction Machinery



▲ Construction Machinery



▲ Construction Machinery

www.china-supplier-casting.com





Ningbo Hongcheng Machinery Co.,Ltd.

Fax:86-574-88345258

Tel:86-574-88345599

Mob:86-15888122228

Email:kiven@china-supplier-casting.com

ADD:Kongjiatan,Hengxi Town,Yinzhou,Ningbo,China

Web:www.china-supplier-casting.com

